





**Davantis Technologies**

The real video analytics experts  
in perimeter security.

---

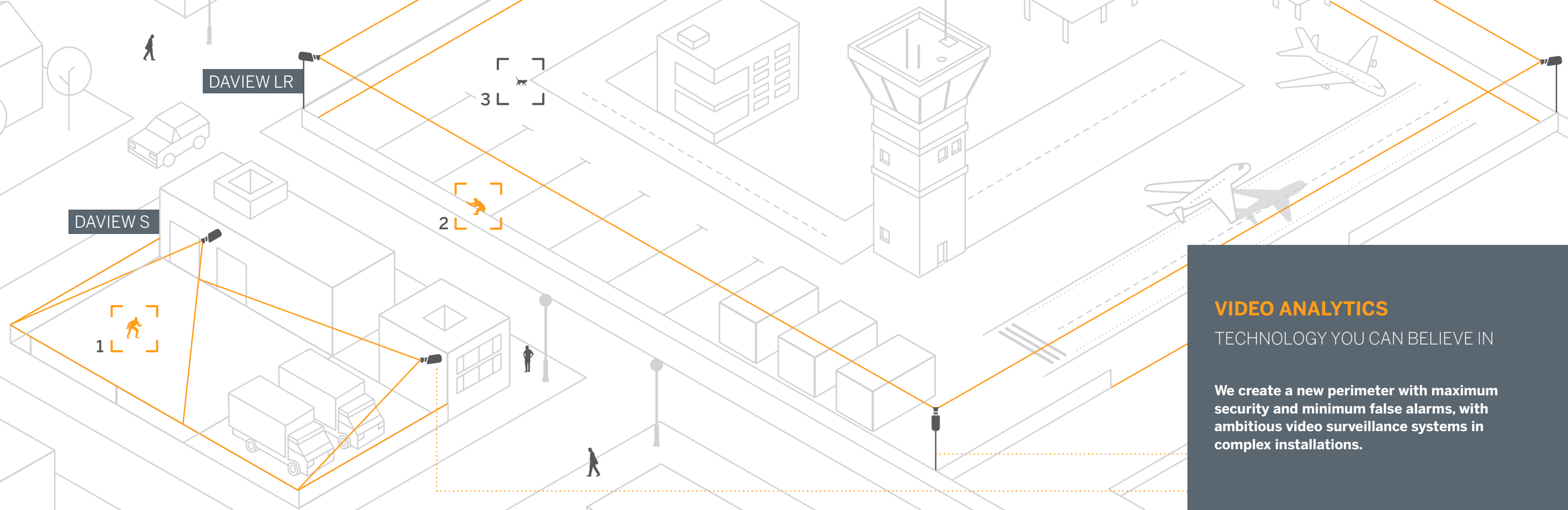
**More than a decade looking  
beyond the obvious, 100 %  
devoted to video analytics.  
Get the best from your  
cameras with our latest  
generation algorithms.**

Your best choice  
for long distances

We don't wait for  
things to happen

Technology you  
can believe in

Sharing  
knowledge

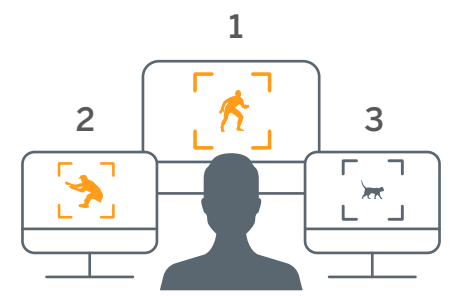


**VIDEO ANALYTICS**  
 TECHNOLOGY YOU CAN BELIEVE IN

We create a new perimeter with maximum security and minimum false alarms, with ambitious video surveillance systems in complex installations.

## WHY VIDEO ANALYTICS

SMART SOLUTION FOR MORE EFFECTIVE PROTECTION



**More efficient staff with fewer resources.**



**Your best choice for long distances. Perimeter surveillance solutions for safer spaces.**



**Quick, easy alarm checks. Act within seconds.**



### Committed to the success of each project

We study each case and advise you on the best solution, guiding you through every phase of the project, starting with the sales visit, through system design, planning and commissioning.



### We share knowledge

Our excellent technical service is highly committed and provides remote support. We are always there for you.



### Internationally recognised quality

Over 10,000 km / 6,000 mi of perimeter under surveillance with channels installed in more than 40 countries worldwide.



### Integrated solution

In-house technology compatible with all hardware brands. Total freedom to design a superior CCTV system. Compatible with most CMS and PSIM.

# REAL SOLUTIONS AROUND THE WORLD

## ACHIEVING SUCCESS GAINING EXPERIENCE

We have solutions for every customer: logistics centres, airports, photovoltaic plants, military installations, critical infrastructures, factories, universities, power plants, museums, etc.

RAILWAY  
INFRASTRUCTURES  
FRANCE -  
UNITED KINGDOM



AIRPORTS  
UNITED  
KINGDOM

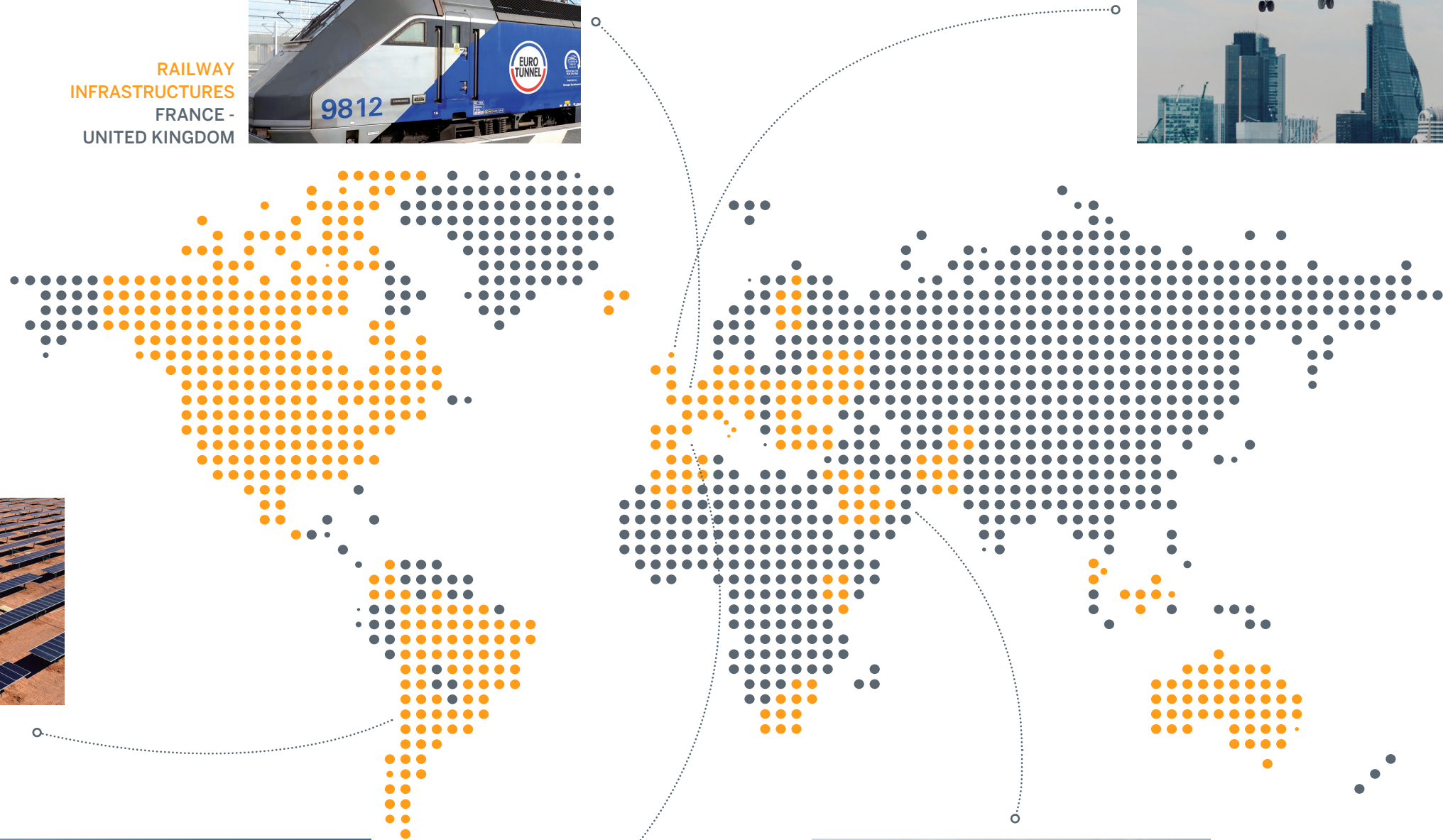
SOLAR PLANTS  
CHILE



OIL REFINERY PLANTS  
SPAIN



MUSEUMS  
ABU DHABI  
UNITED ARAB EMIRATES



# DAVANTIS SOLUTIONS

WE DETECT THE INVISIBLE

Quick and easy installation

Highly intuitive software

Remote technical support

ONVIF protocol compatible

Compatible with all CMS and PSIM

Relays for activating external devices

High performance perimeter security

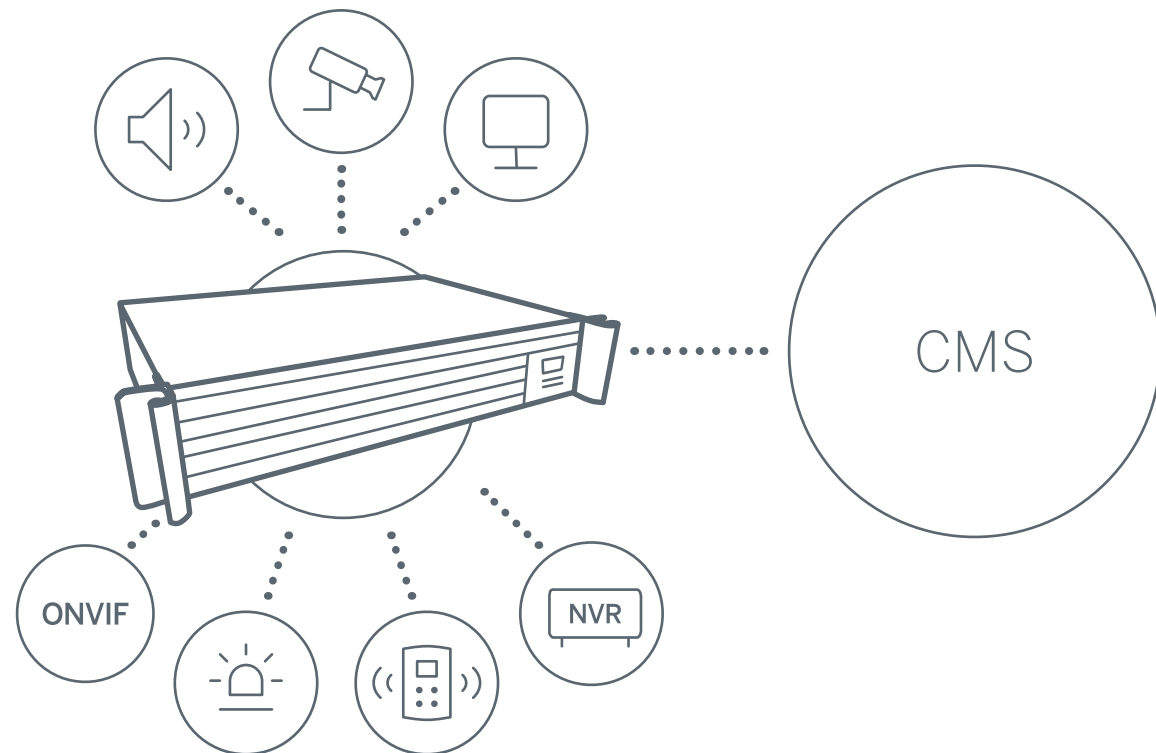
CPU used exclusively for video analytics

## SOFTWARE COMPATIBLE WITH ALL SYSTEMS



### Smart Walk

With our patented technology SmartWalk it takes less than 5 minutes to configure each camera.



# DAVIEW S / DAVIEW LR

A solution for each customer, with state-of-the-art technology, compatible with every security system on the market.

The Daview S and Daview LR can be hosted on the same server and adapted to the needs of your premises.

|                                    | DAVIEW S       | DAVIEW LR      |
|------------------------------------|----------------|----------------|
| Intruder                           | ●              | ●              |
| Vehicles                           | ●              | ●              |
| Entry / exit                       | ●              | ●              |
| Tampering                          | ●              | ●              |
| Loitering                          | ●              | ●              |
| Appearance / disappearance         | ●              | ●              |
| Virtual Onvif                      | ●              | ●              |
| Combination of rules               | ●              | ●              |
| Integration with VMS, CMS and PSIM | ●              | ●              |
| <b>HR</b> High resolution analysis |                | ●              |
| Smart PTZ                          |                | ●              |
| Virtual IR for thermal cameras     |                | ●              |
| Stabiliser for adverse conditions  |                | ●              |
| Anti-dead zone corridor view       |                | ●              |
| Distance thermal camera            | 235 m / 257 yd | 505 m / 552 yd |
| Distance day/night camera          | 67 m / 73 yd   | 120 m / 131 yd |

## DAVIEW S

POWERFUL VIDEO ANALYTICS SYSTEM

235 m / 257 yd

Detection with thermal camera

67 m / 73 yd

Detection with day/night camera

## DAVIEW LR

PROTECTION FOR LARGE PERIMETERS

505 m / 552 yd

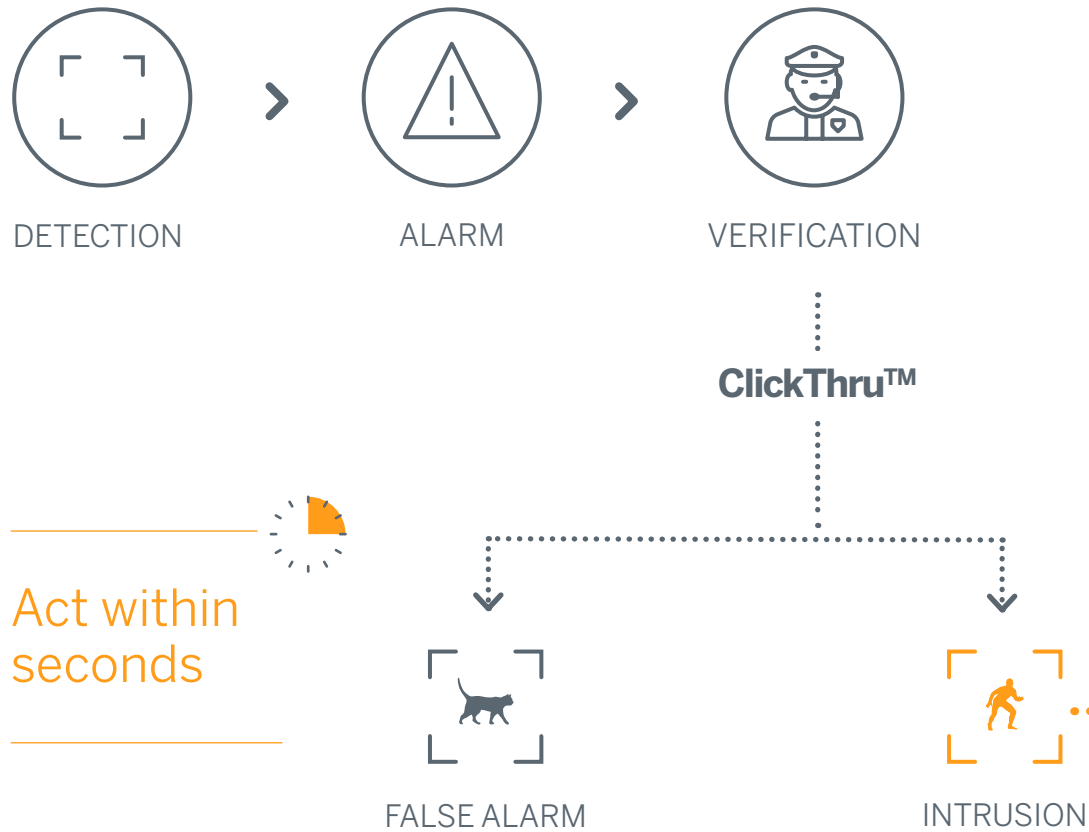
Detection with thermal camera

120 m / 131 yd

Detection with day/night camera

# WHY DAVANTIS?

## VERIFICATION PROCESS



# REMOTE ACTIVATION OF DETERRENT DEVICES



## ClickThru™

Our exclusive technology is a unique, simple, efficient system integrated into all CMS, VMS and PSIM.



**Click 1**  
**Snapshot**  
with a box highlighting the cause of the alarm.



**Click 2**  
**Video**  
of the alarm at the activation point.



**Click 3**  
**Live access**  
to the camera for immediate verification.

Your security staff can use our app to monitor the site and act within seconds.



Police



Owner



Security

# DAVIEW S

## POWERFUL VIDEO ANALYTICS SYSTEM

Range table for thermal cameras

| f (mm/inch) | Pixel pitch (µm) | Sensor (px) | HFOV (o) | Blind distance (m/yd) | Distance (m/yd) |
|-------------|------------------|-------------|----------|-----------------------|-----------------|
| 9/0,35      | 25               | 320x240     | 48°      | 5/5                   | 50/55           |
| 9/0,35      | 25               | 384x288     | 56°      | 4/4                   | 50/55           |
| 13/0,51     | 25               | 320x240     | 34°      | 8/9                   | 90/98           |
| 13/0,51     | 17               | 320x240     | 24°      | 10/11                 | 95/104          |
| 13/0,51     | 17               | 384x288     | 28°      | 8/9                   | 100/109         |
| 13/0,51     | 17               | 336x256     | 25°      | 10/11                 | 100/109         |
| 14/0,55     | 25               | 384x288     | 38°      | 7/8                   | 100/109         |
| 18/0,70     | 25               | 384x288     | 30°      | 10/11                 | 125/137         |
| 19/0,75     | 25               | 320x240     | 24°      | 12/13                 | 130/142         |
| 19/0,75     | 25               | 384x288     | 28°      | 10/11                 | 130/142         |
| 19/0,75     | 17               | 320x240     | 16°      | 15/16                 | 140/153         |
| 19/0,75     | 17               | 336x256     | 17°      | 14/15                 | 140/153         |
| 25/0,98     | 25               | 384x288     | 22°      | 13/14                 | 165/180         |
| 35/1,38     | 25               | 320x240     | 13°      | 23/25                 | 215/235         |
| 35/1,38     | 25               | 384x288     | 16°      | 20/22                 | 215/235         |
| 35/1,38     | 17               | 320x240     | 9°       | 28/31                 | 235/257         |
| 35/1,38     | 17               | 384x288     | 11°      | 23/25                 | 235/257         |
| 35/1,38     | 25               | 384x288     | 15°      | 20/22                 | 230/252         |
| 35/1,38     | 17               | 336x256     | 9°       | 27/30                 | 235/257         |

Range table for day/night cameras

|               | f (mm/inch) | Height (m/ft) | Sensor | HFOV (o) | Blind distance (m/yd) | Distance (m/yd) |
|---------------|-------------|---------------|--------|----------|-----------------------|-----------------|
| Standard view | 3/0,12      | 4/13          | (1/3)" | 77°      | 2/2                   | 32/35           |
|               | 8/0,31      | 4/13          | (1/3)" | 33°      | 8/9                   | 67/73           |



DAVIEW S

COMBO



DAVIEW LR

# DAVIEW LR

## PROTECTION FOR LARGE PERIMETERS

Range table for thermal cameras

| f (mm/inch) | Pixel pitch (µm) | Sensor (px) | HFOV (o) | Blind distance (m/yd) | Distance (m/yd) |
|-------------|------------------|-------------|----------|-----------------------|-----------------|
| 19/0,75     | 25               | 320x240     | 24°      | 12/13                 | 180/197         |
| 19/0,75     | 25               | 384x288     | 28°      | 10/11                 | 180/197         |
| 19/0,75     | 17               | 320x240     | 16°      | 15/16                 | 195/213         |
| 19/0,75     | 17               | 336x256     | 17°      | 14/15                 | 195/213         |
| 25/0,98     | 25               | 384x288     | 22°      | 13/14                 | 225/246         |
| 35/1,38     | 25               | 320x240     | 13°      | 23/25                 | 300/328         |
| 35/1,38     | 25               | 384x288     | 16°      | 20/22                 | 305/334         |
| 35/1,38     | 17               | 320x240     | 9°       | 28/31                 | 330/361         |
| 35/1,38     | 17               | 384x288     | 11°      | 23/25                 | 330/361         |
| 35/1,38     | 17               | 336x256     | 9°       | 27/30                 | 330/361         |
| 37/1,46     | 25               | 384x288     | 15°      | 20/22                 | 315/344         |
| 50/1,97     | 25               | 320x240     | 9°       | 31/34                 | 405/443         |
| 50/1,97     | 25               | 384x288     | 11°      | 25/27                 | 405/443         |
| 50/1,97     | 17               | 320x240     | 6°       | 37/40                 | 440/481         |
| 65/2,56     | 25               | 320x240     | 7°       | 41/45                 | 490/536         |
| 60/2,36     | 17               | 384x288     | 6°       | 37/40                 | 505/552         |

Range table for day/night cameras

|               | f (mm/inch) | Height (m/ft) | Sensor | HFOV (o) | Blind distance (m/yd) | Distance (m/yd) |
|---------------|-------------|---------------|--------|----------|-----------------------|-----------------|
| Standard view | 15/0,59     | 4/13          | (1/3)" | 18°      | 1/1                   | 120/131         |
| Corridor view | 15/0,59     | 4/13          | (1/3)" | 14°      | 12/13                 | 120/131         |

Camera installed 4 metres /4 yd from the ground. The maximum range obtained is a 1.8-metre / 6 ft person at the top of the image. Distances are shorter in adverse weather conditions. The thermal difference required is 2°C / 35,6 °F. The minimum observation of the person is 2 seconds, recommended 5 seconds. HFOV means horizontal field of view.

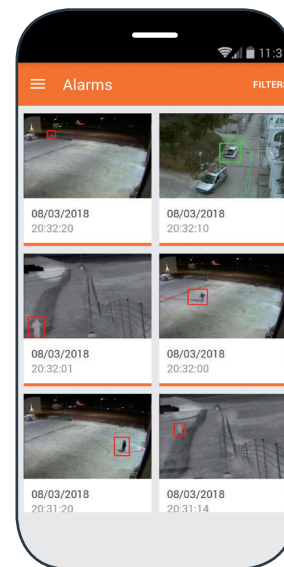
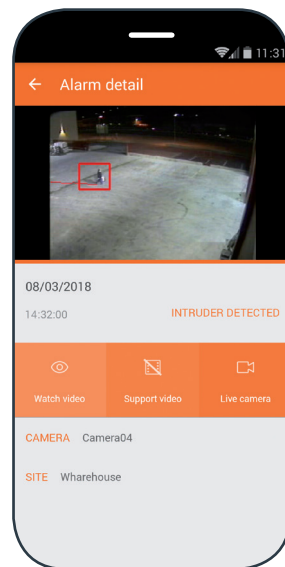
# DAVANTIS APP

SECURITY IN YOUR HANDS

Our app gives you access to your premises and powers the most common actions quickly and easily.



- View alarms with snapshots and videos
- Receive instant alarm notifications
- Check live cameras
- Arm and disarm the system
- Activate deterrents



# WE MAP THE ROAD TO FOLLOW

We design in-house solutions suited to each project. Our research keeps us ahead of market needs with pioneering perimeter security products. Your confidence makes us leaders.

+40  
countries represented

+10,000 km  
/ +6,000 mi  
of perimeter under surveillance

30%  
of our team  
dedicated to research





## DAVANTIS TECHNOLOGIES SL

Barcelona · Spain  
Madrid · Spain  
Nice · France  
Luedinghausen · Germany  
Bogota · Colombia  
Singapore

## DAVANTIS TECHNOLOGIES INC

Washington DC · USA

---

[info@davantis.com](mailto:info@davantis.com)  
[www.davantis.com](http://www.davantis.com)



**CPNI**<sup>®</sup>  
Centre for the Protection  
of National Infrastructure