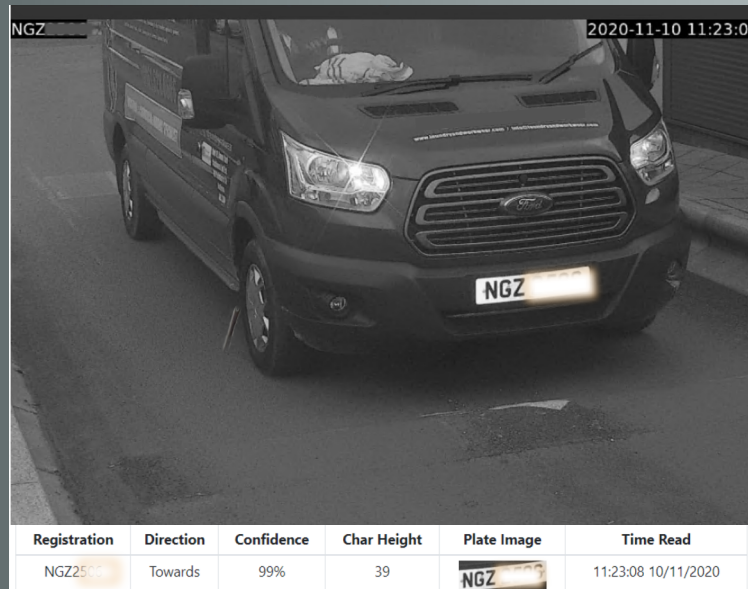


The Puma Bollard Camera from Suilvision utilises the latest in ground breaking software and hardware technology. From the all new Bollard housing to the brand new Linux based software control the Puma Bollard delivers unrivalled performance. An intuitive web GUI customer front end allows the user to easily set up the camera, all the important functions are automatically set leaving the simple task of angling the camera to obtain the best view.

The camera is fitted with a remote control vari-focal lens, to provide the ideal capture of oncoming vehicles. High speed processing of the data enables swift remote operation of associated barriers.



High Quality images 24 hours a day, accurate plate reading along with the mysuilvision Lite web management software providing access control including white list and user barrier control, A range of interfaces allowing users to connect and use their own management software.

Puma Bollard

- Designed specifically for site entrances
- Processor built in
- Intelligent plate finding
- Automatic adjustment of IR Light, Gain and Shutter speed
- Remote zoom/focus of lens via GUI
- Easy set up using Web application
- Integration in 3rd party applications using API
- High accuracy plate read 24/7
- Adjustable sun shield keeps rain off the glass for clear images
- Regulated power supply allowing for input voltages of 6-34 VDC
- Everything in one unit including Barrier Relay
- Connectivity to LAN/WAN & Internet
- 4G Model available
- Secure metal housing
- Cost effective solution
- Use with mysuivision Lite for full access control

Please contact your distributor for more information